

TOWSLING MANUAL



DATE: 03/01/2010	MAGNA TECH, INC.	Revision - 4
PRINT DATE	2010 TOWSLING MANUAL	March 24, 2010
© Copyright 2007 – 2010 Magna Tech, Inc. (All Rights Reserved)		

MAGNA TECH TOW SLINGS

O.E.M. TOWSLING LINE

There can never be enough emphasis placed on safety; we here at Magna Tech believe that safety should be the first consideration given to the design, production and use of all towing related equipment. This Owners Manual was prepared with the intention of giving clear, concise, easy to use guide lines for the safe use and care of Automotive Tow Slings.

Publication of an all exclusive safety precaution list is not possible. Location and situations vary, it is therefore impossible to give a reference which will cover all possible applications.

Ultimately the responsibility for safety rests with the user. It is most important that you keep an alert conscientious attitude and that you observe and apply all known safety practices in every situation to prevent accidents.

**"If you cannot Do It Safely
Don't Do It."**

The procedures in this manual are to give the user general guide lines on connecting and using the equipment. If there are any questions regarding safety in your situation, Don't Do It.

Pay particular attention to the safety section, read and obey all Danger, Warning, and Caution labels to minimize the risk of personal injuries. Improper use can cause damage to towing equipment and vehicles being towed in addition to creating a hazardous condition during towing.

It is impossible to outline all possible uses of Tow Slings. There are many possible hazards and consequences that can come from using an Automotive Tow Sling. Anyone who uses a procedure not recommended by the truck manufacturer must assume responsibility for the safety of personnel or damage to the towed vehicle by the selected method of lifting and towing.

**"The responsibility for
safety rests with the user."**

Because of vehicle design some vehicles cannot be safely towed with a Tow Sling. Refer to the Automotive or Truck Manufacturers Owners Manual or AAA Towing Manual for additional towing information.

AUTOMOTIVE TOWSLING STANDARD FEATURES

MAGNA TECH Tow Slings are made from the best Grade of North American Steel (No foreign steel).

STEEL

All holes are drilled in precision made drill fixtures, holding close tolerances.

MACHINING

Grade 5, Nuts and Bolts are used, with holding tensile strengths up to 92,000 lbs.

FASTENERS

Threaded grease Zerks are standard, to allow the Operator the ability to keep all moving parts moving with ease.

ZERKS

All MAGNA TECH Automotive Tow Slings come standard with Magna Tech's Exclusive CamLOCK Series Lock Barrel Plungers, this allows the Tow-Man to adjust his or her Spacer Bars to the desired length.

CAMLOCKS

The MAGNA TECH Spacer Bar lets you adjust length of the Tow Sling, allowing the operator to place it in the proper Position, whether that would be for storage or hook up.

ADJUSTMENT

All fasteners, Pins, and Plungers are zinc or chrome plated, to withstand weather and prolong wear.

PLATING

MAGNA TECH Towing Accessories are acid etched and rinsed with a phosphate coating. This protects the accessories from rust, allowing the products to endure longer life.

CLEANED

All products that are not plated are Powder Coated with our special Baked on Vinyl Resin Black coating, this allows the owner to use the Tow Sling the way they receive it, or top coat it with any automotive finish.

COATINGS

All Tow Slings are greased with Amoco Premium Lubricate, which has special wear additives.

GREASE

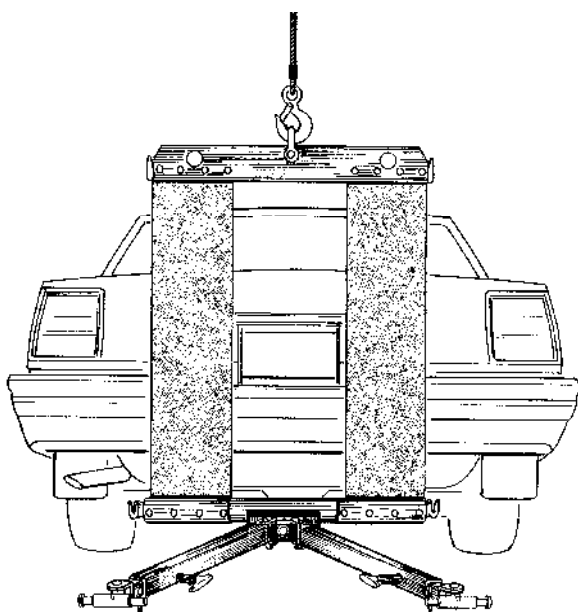
MAGNA TECH Tow Slings are boxed in their own special container, protecting it from outside damage.

BOXED

All Tow Slings are inspected before leaving Magna Tech, Inc. (Look for the **RED QC STAMP** in the corner of each package).

INSPECTION

SAFETY LABELS



SAFETY LABELS

It is imperative that all warnings are obeyed at all times. Be certain all warning decals are in place and readable. Report any damaged or missing decals to the proper authority. Replacement decals are available free of charge from your local distributor or from:

MAGNA TECH, INC. / TOLLE PRODUCTS
4331 South Johnson Road
Chanute, Kansas 66720

The terms **DANGER**, **WARNING**, **CAUTION**, and **NOTE** appear throughout this manual and on warning decals. Their purpose is to bring attention to any condition, situation, or information regarding your safety, the safety of others or the prevention of damage to equipment.

ANSI SAFETY LABELS

SIGNAL WORD

MEANING



DANGER

INDICATES AN IMMINENTLY HAZARDOUS SITUATION WHICH, IF NOT AVOIDED, WILL RESULT IN DEATH OR SERIOUS INJURY.



WARNING

INDICATES A POTENTIALLY HAZARDOUS SITUATION WHICH, IF NOT AVOIDED, WILL RESULT IN DEATH OR SERIOUS INJURY.



CAUTION

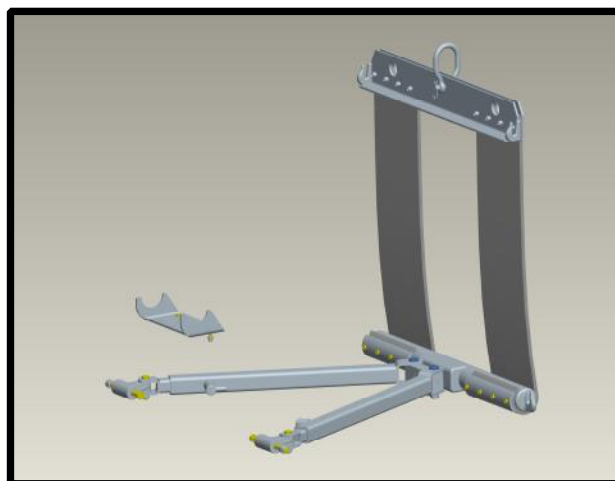
INDICATES A POTENTIALLY HAZARDOUS SITUATION WHICH, IF NOT AVOIDED, WILL RESULT IN MINOR OR MODERATE INJURY.



NOTE

THE WORD "NOTE" PRECEDES INFORMATION WHICH IS VITAL TO THE PROPER OPERATION OR CARE OF THE EQUIPMENT.

DECAL LOCATION CHART



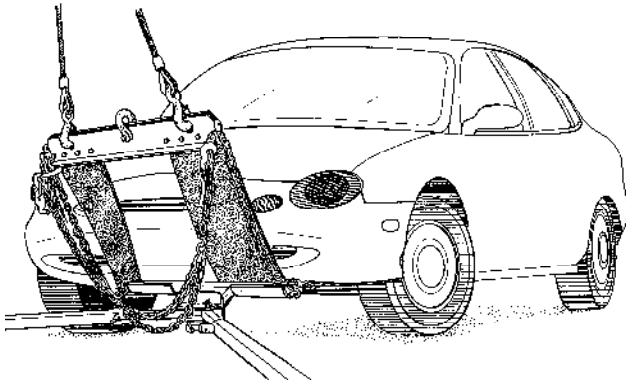
"Replacement decals are available free of charge."



MAGNA TECH, INC. / **TOLLE PRODUCTS**
 4331 South Johnson Road
 Chanute, Kansas 66720



**"It is the user's responsibility to know
The capacities and limitations of the
equipment they use"**



OPERATOR SAFETY INSTRUCTIONS

Automotive Tow Sling to be used by a trained professional only.

Do not exceed lifting and towing capacities.

The (LD) Light Duty Automotive Tow Sling is designed and built with a lifting capacity Of 3,500 lbs. and a towing capacity of 7,000 lbs. GVW

(LMD) Light Medium Duty Tow Slings are designed and built with a lifting capacity of 4,500 lbs. and a towing capacity of 9,000 lbs. GVW

(LHD) Light Heavy Duty Tow Slings are designed and built with a lifting capacity of 6,000 lbs. and a towing capacity of 12,000 lbs. GVW

Do not place any portion of Body, Head, or Limbs into potential pinch points.

Do not use a Tow Sling with damaged or missing parts.

Always use safety chains when towing.

It is the user's responsibility to know and observe the capacities and limitations of the equipment they use. Be alert and watch for any condition that may affect performance of the Magna Tech Tow Sling. If a problem does arise, and there is a question concerning damage to the Tow Sling, or concerning a safety procedure; **Do Not Use the Tow Sling until the condition is corrected.**

Magna Tech; will not be responsible or liable for any improper installation, misapplication, or misuse of the Tow Sling. Any repair, welding or modification to the Tow Sling will void all warranties.

Do not attempt to connect or use the Tow Sling without proper instruction. This includes reading and understanding the operator's manual.

Obey all warnings including OSHA and DOT requirements for Towing.

Be aware of people in the work area who may be at risk during the connecting procedure.

Wear and use the proper safety equipment as called for by your employer, hand & eye protection, safety vests, etc.

Know where to get help in the event of an emergency or injury.

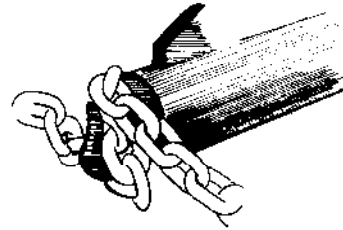
Do not operate equipment if work ability is impaired by fatigue, illness, medication or other causes.

OPERATOR SAFETY INSTRUCTIONS

Never use a Tow Sling that has damaged or missing parts.

- Worn or damaged shackles
- Loose or missing bolts
- Damaged knuckle joints
- Missing fasteners
- Damaged chain or chain hooks
- Worn or damaged Sling Straps

Towing speed should not exceed 50 MPH.



WARNING

INDICATES A POTENTIALLY HAZARDOUS SITUATION WHICH, IF NOT AVOIDED, WILL RESULT IN DEATH OR SERIOUS INJURY.

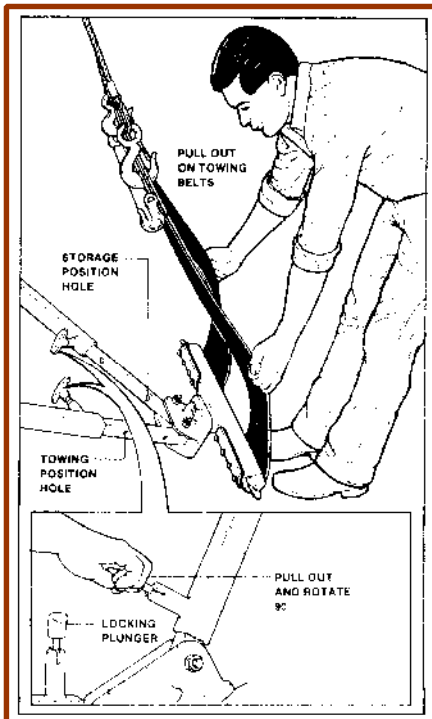
Exceeding the Lifting or Towing Capacity of the Tow Sling may cause it to fail, creating a safety hazard which could result in serious injury or death.

Be certain all Chains and related equipment having adequate capacity for use with the Tow Sling.

If you have any questions regarding the safe use or maintenance of the Tow Sling, contact the safety engineer at Magna Tech.

**"EXCEEDING CAPACITIES CREATES
SAFETY HAZARDS"**

EMPLOYER SAFETY REQUIREMENTS



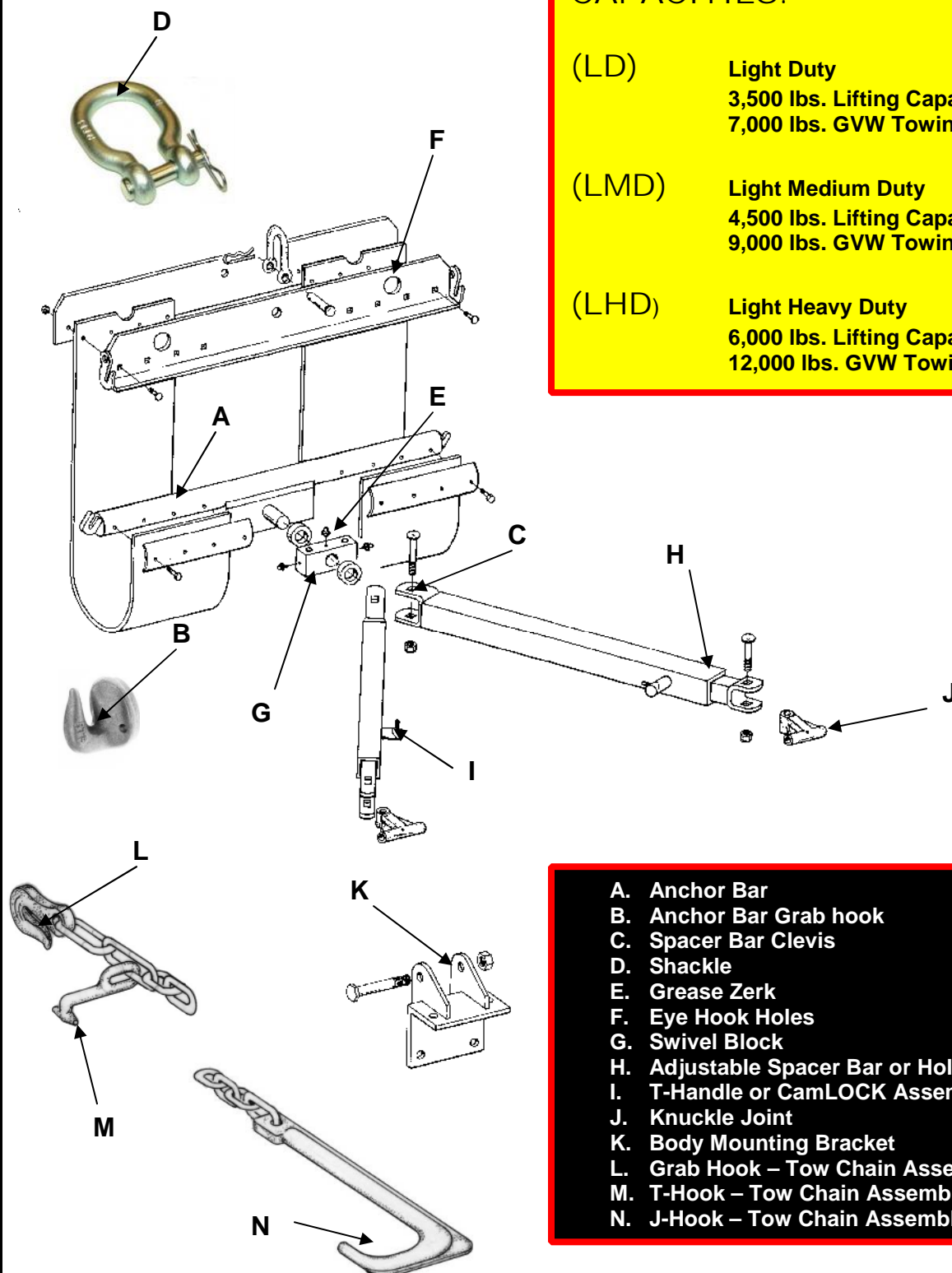
This guideline is to assist owners/employers to ensure the Tow Sling is serviced and operated in a safe manner.

- Establish a regular inspection program which includes inspection reports and service records.
- Make sure that any worn or damaged equipment is properly repaired or replaced before returning the Tow Sling to service.
- The employer shall provide training and instruction in safe methods of connecting and using the Tow Slings to employees before assigning or allowing them to operate service or repair the equipment. This training shall include safety procedures provided by the equipment manufacturer. A record of training dates, employee's names and level of training should be maintained.
- The employer will specifically inspect all safety equipment and protective devices on the equipment to ensure they are serviceable. Operation of the equipment will not be permitted unless the Tow Sling is in good service condition.
- The employer shall require the appropriate safety equipment be worn by employees for protection as required, hand & eye protection, safety vests, etc.

TERMS YOU NEED TO KNOW

CAPACITIES:

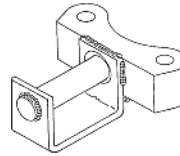
(LD)	Light Duty 3,500 lbs. Lifting Capacity 7,000 lbs. GVW Towing Capacity
(LMD)	Light Medium Duty 4,500 lbs. Lifting Capacity 9,000 lbs. GVW Towing Capacity
(LHD)	Light Heavy Duty 6,000 lbs. Lifting Capacity 12,000 lbs. GVW Towing Capacity



- A. Anchor Bar
- B. Anchor Bar Grab hook
- C. Spacer Bar Clevis
- D. Shackle
- E. Grease Zerk
- F. Eye Hook Holes
- G. Swivel Block
- H. Adjustable Spacer Bar or Holdback Arm
- I. T-Handle or CamLOCK Assembly
- J. Knuckle Joint
- K. Body Mounting Bracket
- L. Grab Hook – Tow Chain Assembly
- M. T-Hook – Tow Chain Assembly
- N. J-Hook – Tow Chain Assembly

INSPECT TOW SLING BEFORE EACH USE

- 1) Shackle: Excessive wear or pin damaged.
- 2) Lift Bar: Lift Bar hooks damage.
- 3) Swivel Block: Center Pin damage, bent or binding.
- 4) Spacer Bar: Loose Bolts; damaged CamLOCK or T-Handle Lock.
- 5) Knuckle: Excessive wear, loose Bolts or stretched Knuckle Pins.
- 6) Chain Assembly: Stretched, cracked, worn Links, bent or worn J-Hooks.
- 7) Sling Strap: Excessive wear, cuts or rips.



Examine the Chain closely, link by link.

CHAIN INSPECTION

Look for: Stretch
Wear
Cracks
Gouges



Remove Chains from Service:

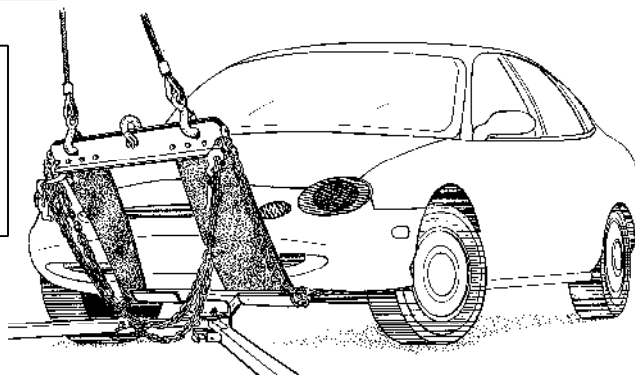
DAMAGED CHAINS

- A) When any individual Link is worn more than 25% of the original thickness of metal.
- B) If the Chain shows evidence of stretches or distortion of more than 5% of any five link section.
- C) If there is any binding at link to link points indicating a collapse of the link due to stretching.

CONNECTING THE TOW SLING

ATTACH THE TOW SLING TO VEHICLES

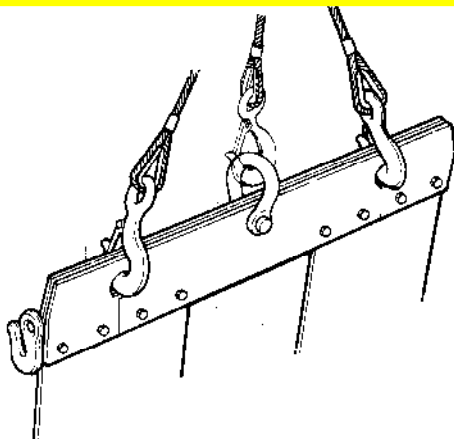
Take the Tow Sling out of the storage position. Extend the adjustable Spacer Bars. Rotate the CamLOCKS or "T" handles to the unlock position. Extend the Spacer Bars and lock in place.



The Winch Cables may be attached to the Tow Sling Lifter Bar by using the Center Shackle, or the two outside Eye Hook holes.

Make sure the cable(s) are secure on the Lifter Bar.

Connection: Double Winch Cables
(USE TWO OUTSIDE HOLES)

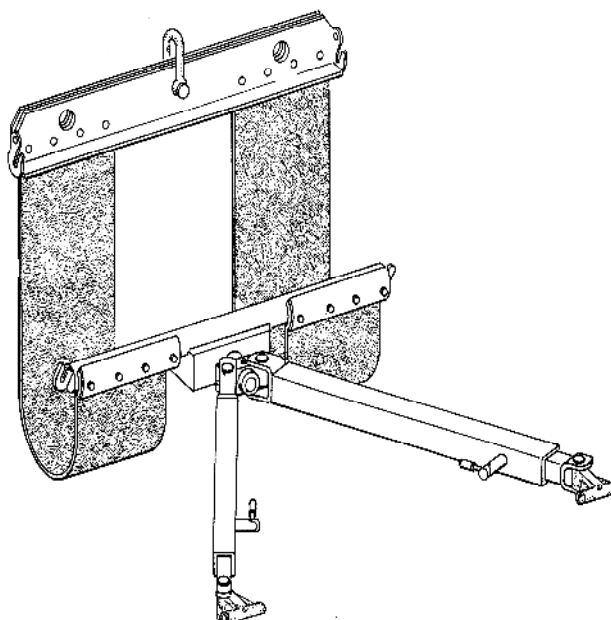


Connect in CENTER SHACKLE for Single Winch Cable

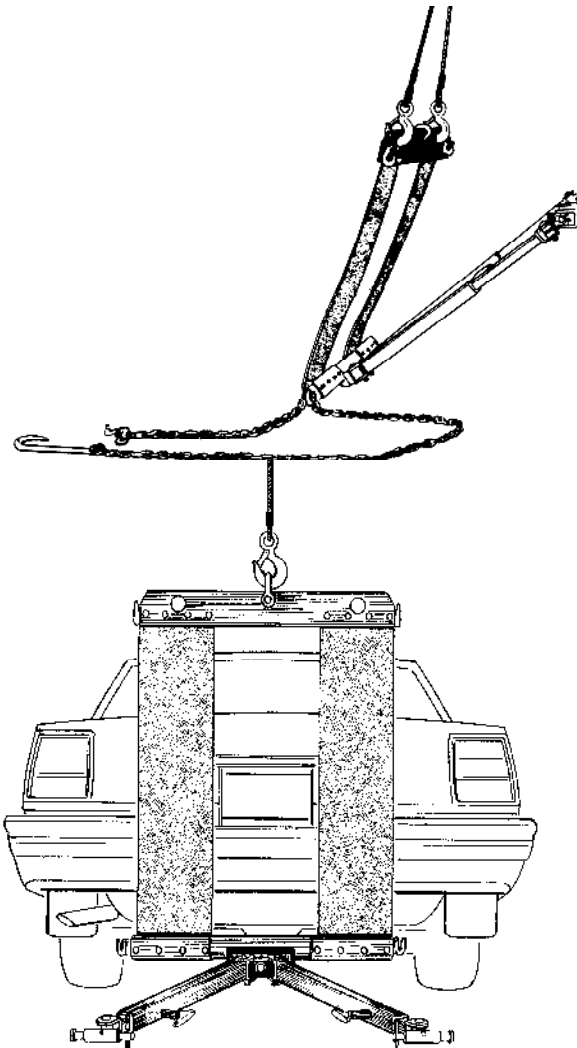
CAUTION

INDICATES A POTENTIALLY HAZARDOUS SITUATION WHICH, IF NOT AVOIDED, WILL RESULT IN MINOR OR MODERATE INJURY.

Because of automotive design restrictions some vehicles can not be safely towed with a Tow Sling. Refer to the Vehicle Manufacturers Manual or AAA Towing manual for towing information.



USING THE TOW SLING



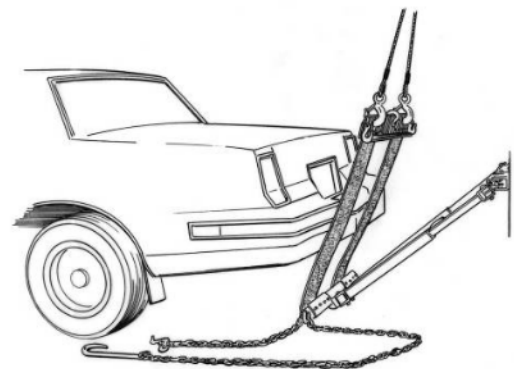
Lower the Wheel Lift if applicable. Lower the Sling until it is approximately 1" from the ground.

CAUTION

INDICATES A POTENTIALLY HAZARDOUS SITUATION WHICH, IF NOT AVOIDED, WILL RESULT IN MINOR OR MODERATE INJURY.

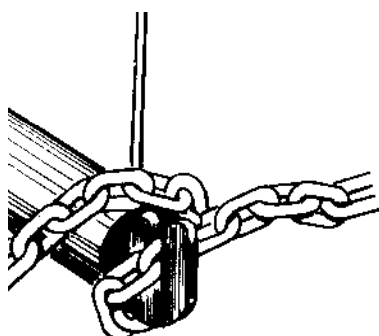
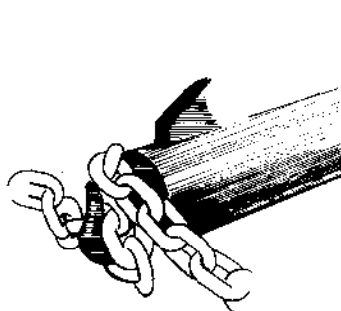
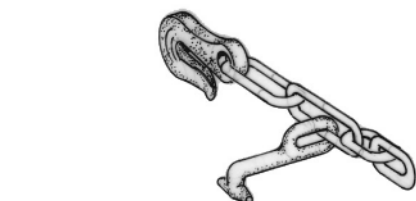
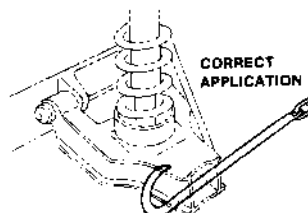
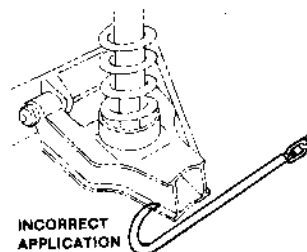
Set the parking break or use wheel chocks to prevent the vehicle towed from moving during the hook up procedure

Back the wrecker into position with the Anchor Bar centered on and as far under the vehicle as possible to make the connection. The Anchor Bar should reach a strong member of the vehicle chassis.



USING THE TOW SLING

Attach the Tow Chain to each side of the vehicle. Use the Tow Chain assembly recommended by the Automobile or Light truck manufacturer. "T" Hook, "J" Hook, or Grab Hook chain assembly.



Pull the Chain as tight as possible. Connect the Tow Chain Assembly to the Anchor Bar Grab Hook.

Make sure the Chains are fully seated in the Anchor Bar Grab Hook.

Put a Tow Chain Safety Wrap around the Anchor Bar Grab Hook. Connect the Chain to the Lifter Bar Grab Hook and secure the end of the Chains.

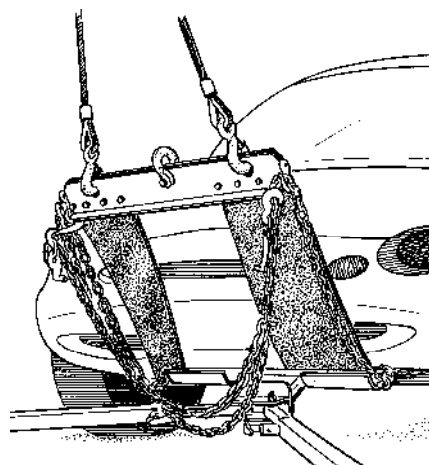


! DANGER

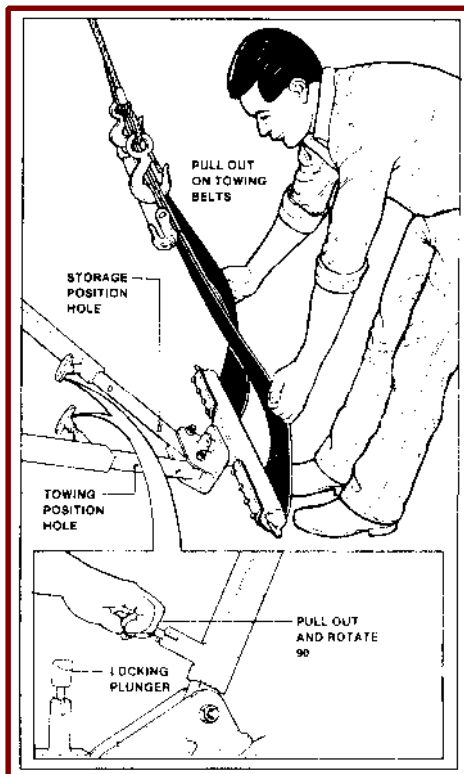
Do not use the tow sling chain assembly or J-Hook for recovery work, or towing vehicles over 7,000 G.V.W.

Magna Tech Tow Sling Chain Assemblies have a working load rating of 3,900 lbs. each.

603-3900-250



USING THE TOW SLING



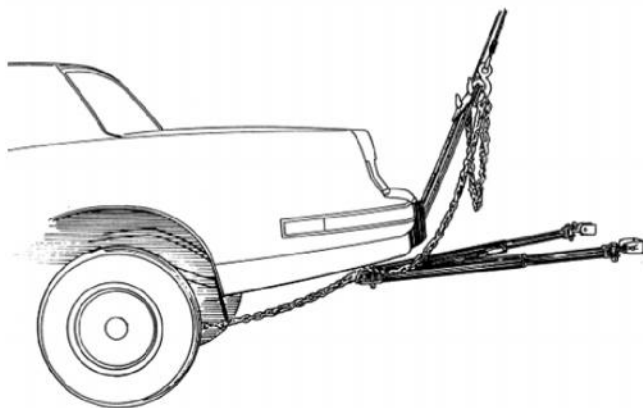
Inspect the Automotive Tow Sling connection making certain there will be no damage done to the vehicle when the Sling is lifted.

⚠ WARNING

**USE SAFETY CHAINS
ON ALL TOWING AND
LIFTING APPLICATIONS
DO NOT REMOVE LABEL**

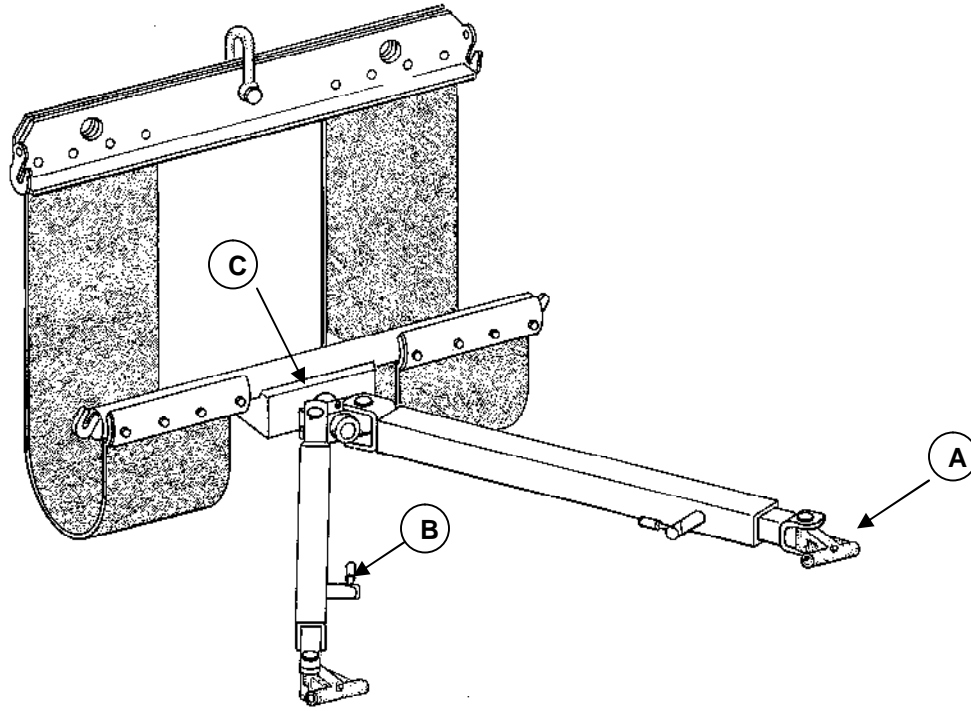
NOTE:

Spacer Blocks may be required in some applications, refer to the Automobile or Light Truck Manufacturers Manual.



Lift the vehicle being towed to the desired height. Release the parking brake or remove wheel chocks. Secure the steering wheel if necessary.

TOW SLING CARE AND MAINTENANCE



LUBRICATION

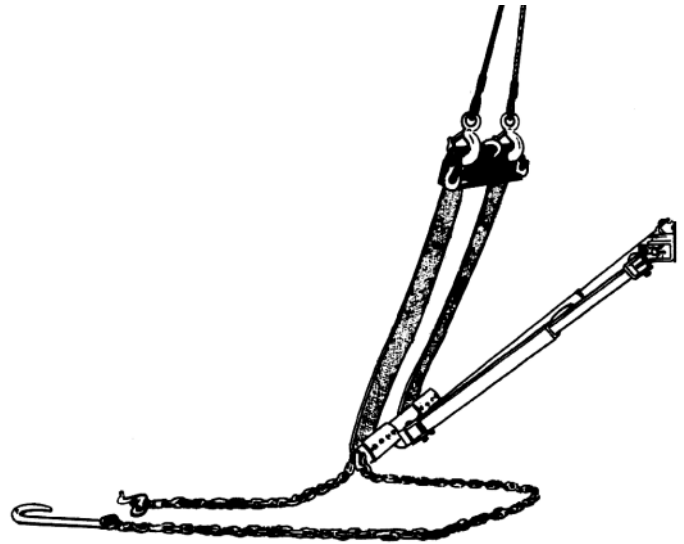
There are Lubrication Points which need lubricated Bi-weekly to prevent wear and ensure proper operation.

- | | |
|--|-------------|
| A) Knuckle Joints | 2 locations |
| B) Spacer Bar "T" Handle or CamLOCK Assembly
(3-Stage Spacer Bars have 4 locations) | 2 locations |
| C) Swivel Block | 3 locations |

TOW SLING CARE AND MAINTENANCE

Fully extend Adjustable Spacer Bars, inspect the bars for excessive wear or damage, clean the inner bar and apply a light coat of lubricant on all four surfaces. The stop mechanism should prevent the inner and outer adjustable spacer bars from separating. If the bars separate, they need to be repaired or replaced before the Automotive Tow Sling is used.

Make certain the T-Handle or CamLOCK plunger rotates, extends and retracts freely.

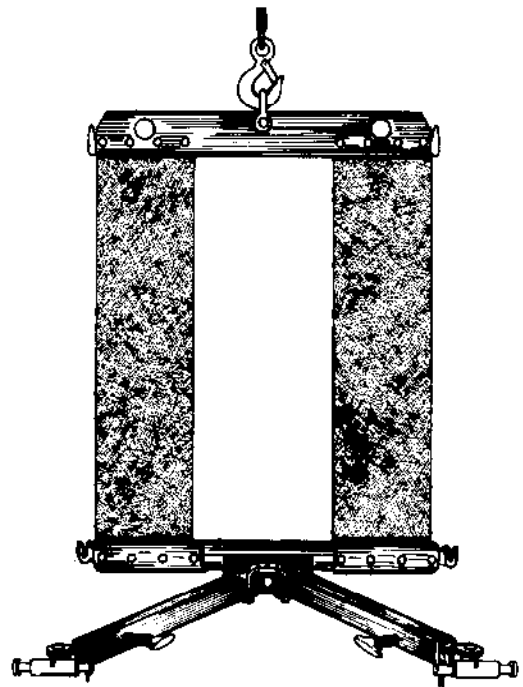


Check all hardware, bolts, nuts, body bracket pins, and center swivel pin lock bolt.

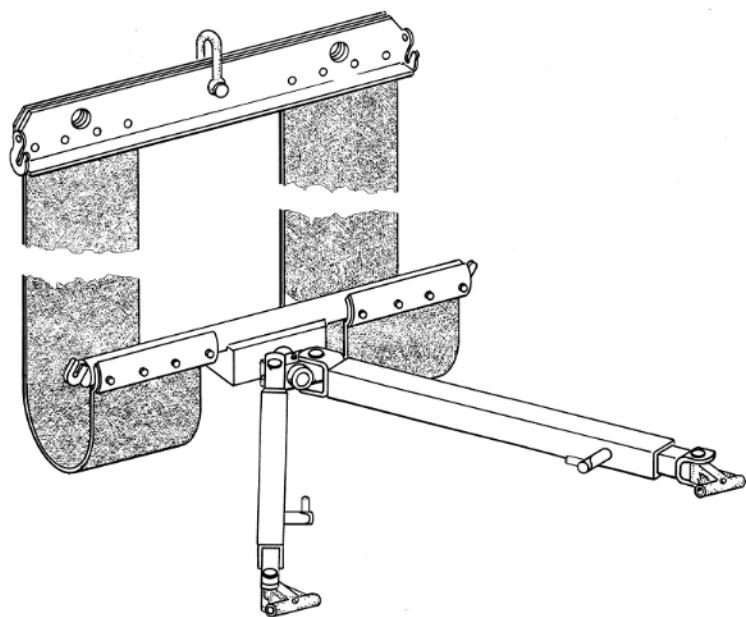
Check sling strap for excessive wear, cuts, and abrasions. If there is any nylon or cable showing on the strap surface, both sling straps should be replaced to insure proper lifting and towing.

Clean sling straps with some type of rubber or vinyl cleaner.

Keep sling straps free of oil, lubricants and corrosive materials.



TOW SLING CARE AND MAINTENANCE



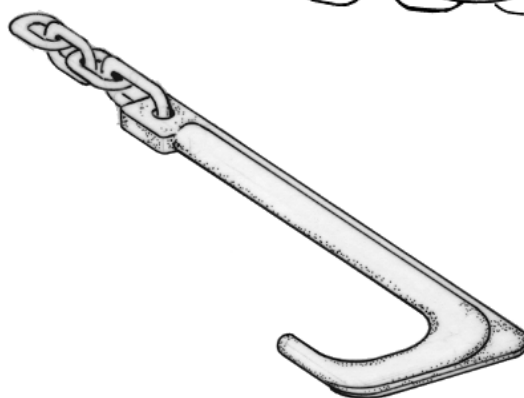
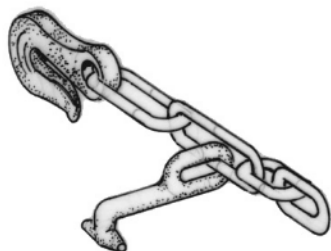
Inspect the lifter bar, shackles; grab hooks for excessive wear, cracks or damage.

Inspect the anchor bar structure, grab hooks, swivel pin and swivel block for excessive wear, cracks or damage.

Replace any worn or damaged parts and hardware.



Inspect Tow Chain Assemblies for stress cracks and chain damage.



CamLOCK SERIES



350 CamLOCK Series

The original MAGNA TECH CamLOCK Designed by Magna Tech is designed for many different applications. The most common is the Towing & Recovery Industry, which it was originally designed for. The CamLOCK is used on wheel restraints, Tow Slings, Tow Bars and many other applications involving a vertical or horizontal

latching device. In the case of an automotive Tow Sling it allows the operator to release, adjust and lock into position the Tow Sling Spacer Bar, for the right length of space between the vehicle and the Tow Truck.

ROTATE

UNLOCK

LOCK

APPLICATIONS

Automotive:	Trucks, Trailers, Hitches, Towing Accessories, Recreational RV's
Agriculture:	Tractors, Implements, Gates, Hog and Cattle Confinement Equipment
Construction:	Forms, Cranes, Boom Trucks, Hitches, Heavy Equipment
Industry:	Conveyors, Slide Arms, Hitching Devices.
Utility:	Snatch Blocks, Cherry Pickers, Boom Trucks, Trailers

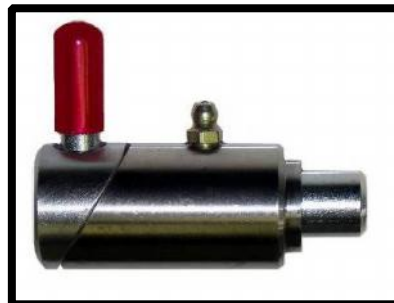
The CamLOCK may be used anytime that you would like to lock two pieces of steel together and keep them in a pinned position. The CamLOCK can be used as a replacement for other conventional T-Handle assemblies.

CamLOCK is the only rebuild-able CAMLOCK in today's market.

The holding strength of CamLOCK is based upon each different size and rating.

To use the **MAGNA TECH CamLOCK** in another field application some common tools may be required:

- 1) Drill ½" Chuck
- 2) Drill Bits, (5/8", 3/4", 1", 1 3/8")
- 3) Vise Grips
- 4) Wire Welder, with .035 Wire
- 5) Lock Tight (Red)

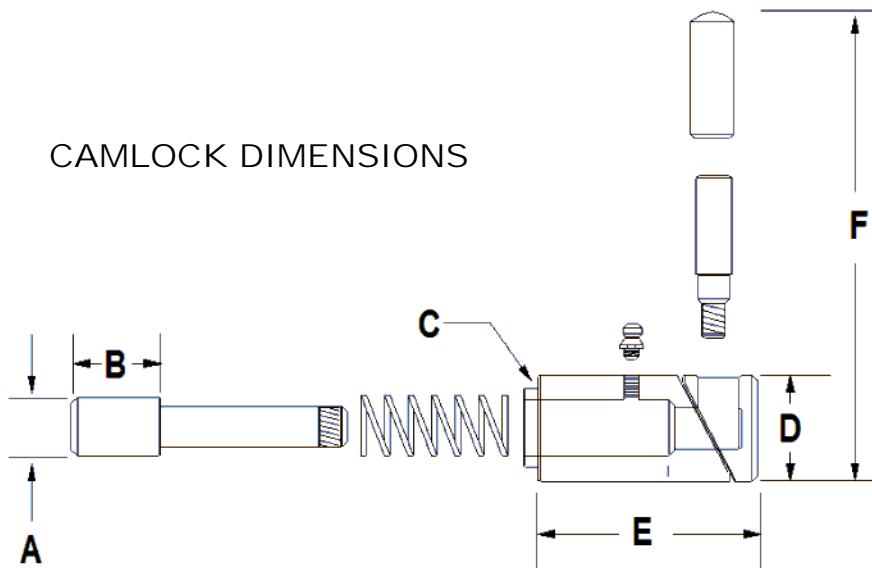




MAGNA TECH, INC.

CamLOCK Series

CAMLOCK DIMENSIONS



DIMENSION CHART

PART NUMBER	DESCRIPTION	(A) PLUNGER SIZE	(B) SHOULDER X (C) DEPTH (DRILL SIZE)	(D) DIAMETER (OVERALL)	(E) LENGTH	(F) HANDLE (HEIGHT)	RATING (LBS)
350-0625-000	5/8" CAMLOCK	5/8"	LD 27/32" (.875) .1875"	1-3/16" OD	2-1/2"	2-3/8"	1,750
350-0750-000	3/4" CAMLOCK	3/4"	LD 31/32" (1.000) .1875"	1-3/16" OD	2-1/2"	2-3/8"	2,000
350-1000-000	1" CAMLOCK	1"	MD 1-7/32" (1.25) .1875"	1-3/8" OD	2-15/16"	3-1/4"	3,750
350-1375-000	1-3/8" CAMLOCK	1-3/8"	HD 1-3/8" (1.375) .1875"	1-3/4" OD	3-1/8"	3-1/2"	7,250

Engineering Data:

Material: Barrel, 1045 CR Bar, Carbon Steel
Plunger & Pin, 1045 CR Bar, Carbon Steel

Plating: Plunger, Screw Cap, Spring & Grease Zerk are Zinc plated for longer field life.

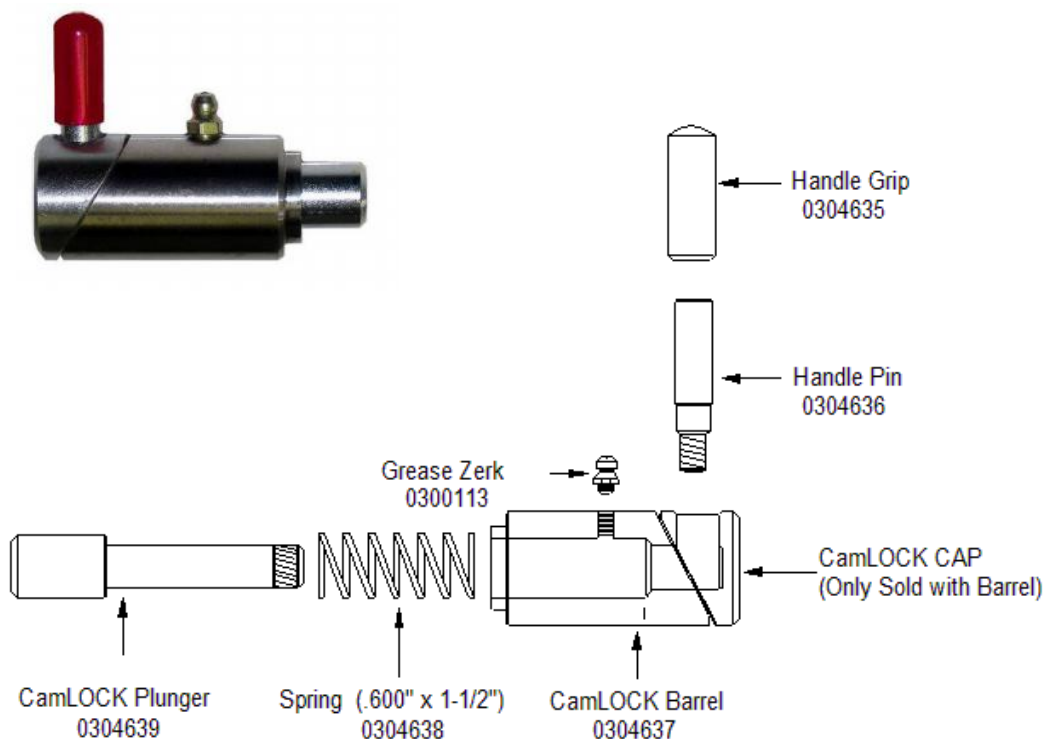
Spring: 3/8" CamLOCK Series: Music Wire, .600 O.D. x 1 1/2" Load Range 26 lbs.
5/8" CamLOCK Series: Music Wire, .600 O.D. x 1 1/2" Load Range 26 lbs.
3/4" CamLOCK Series: Music Wire, .720 O.D. x 1 1/2" Load Range 39 lbs.
1" & 1 3/8" CamLOCK Series: Music Wire, .970 O.D. x 2 1/2", Load Range 20 lbs.

Zerk: Grease Zerk, 1/4" – 28, Spring Loaded Ball & Seat, Zinc plated.

Handle: Each CamLOCK Handle receives a vinyl covering for extra protection.

350-0625-000 CAMLOCK – 5/8"

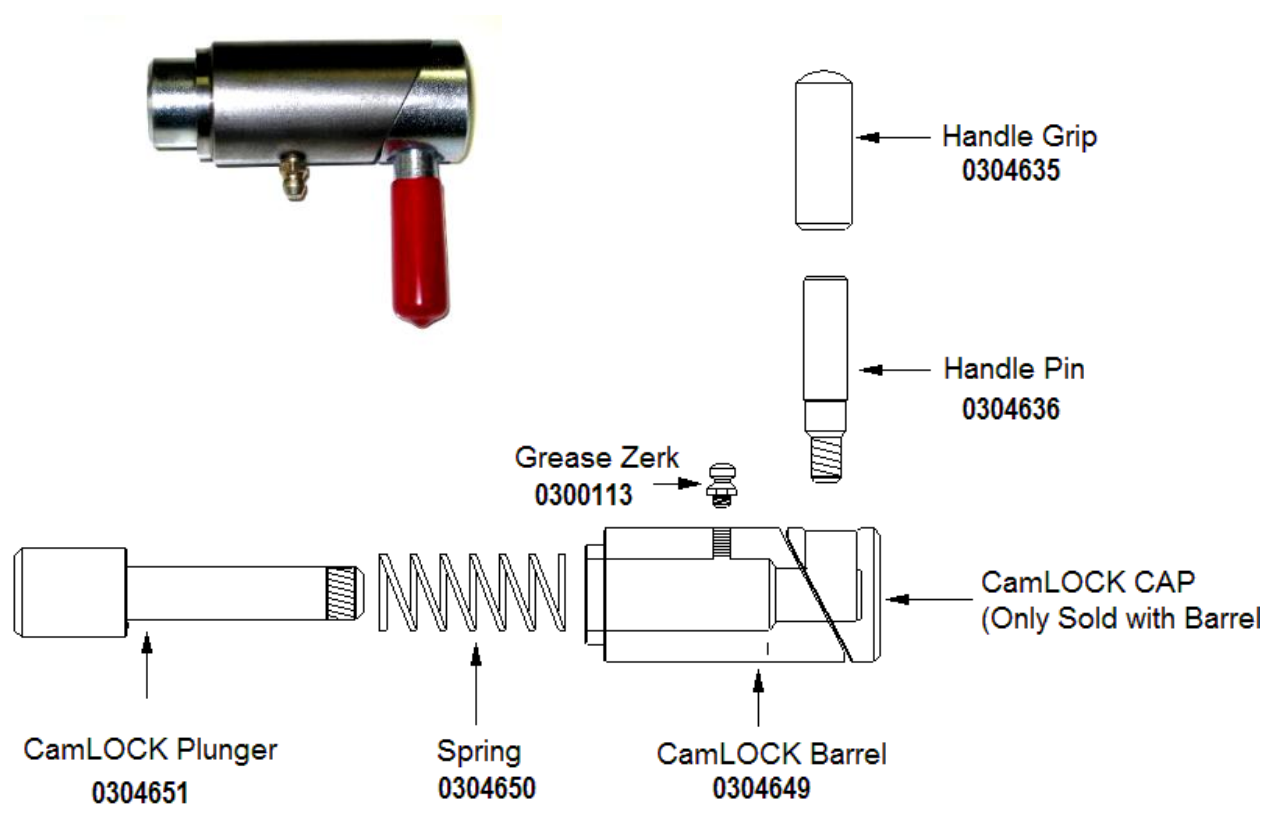
Parts Breakout



ITEM	PART NUMBER	DESCRIPTION	WEIGHT
1	0304637	CAMLOCK BARREL, w / CAP 5/8"	
2	0304638	SPRING (.600 x 1-1/2")	
3	0304639	PLUNGER – 5/8"	
4	0300113	GREASE ZERK (1/4"-28)	
5	0304636	HANDLE PIN – 3/8"	
6	0304635	HANDLE GRIP – (3/8" x 1") RED	

350-0750-000 CAMLOCK – 3/4”

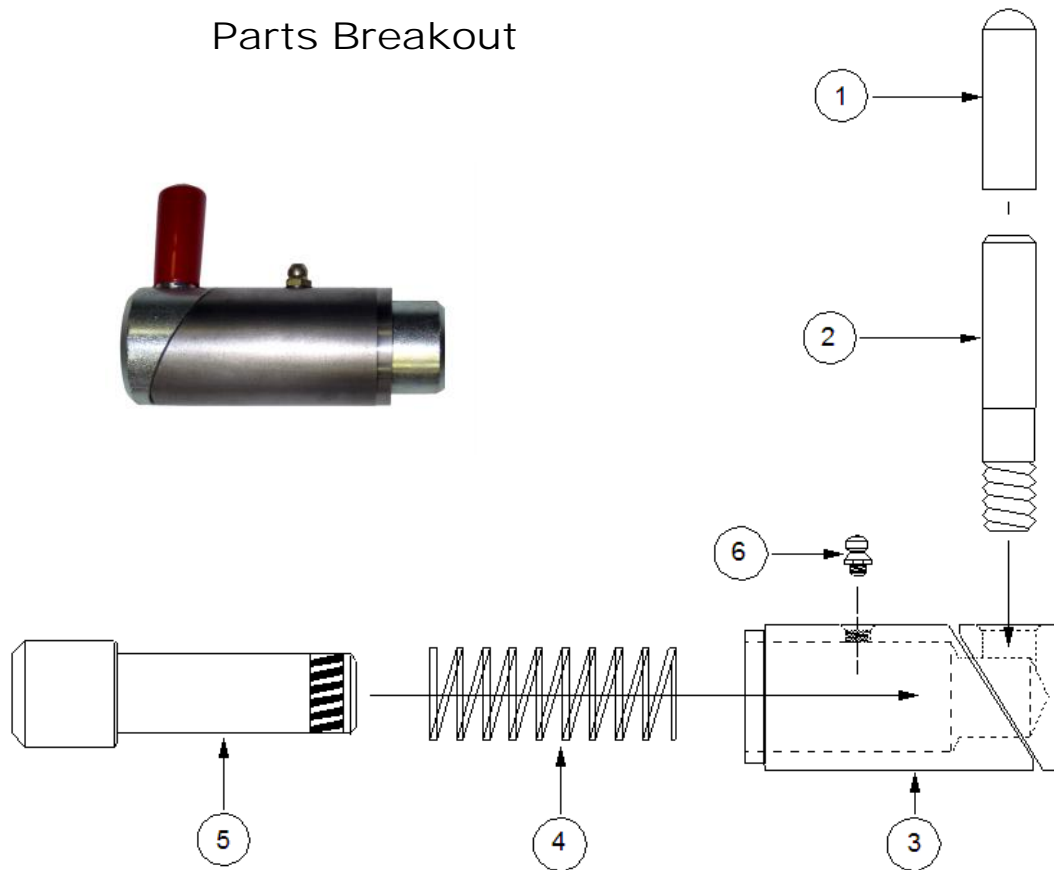
Parts Breakout



ITEM	PART NUMBER	DESCRIPTION	WEIGHT
1	0304649	CAMLOCK BARREL, w / CAP 3/4"	
2	0304650	SPRING	
3	0304651	PLUNGER – 3/4"	
4	0300113	GREASE ZERK (1/4"-28)	
5	0304636	HANDLE PIN – 3/8"	
6	0304635	HANDLE GRIP – (3/8" x 1") RED	

350-1000-000 CAMLOCK – 1”

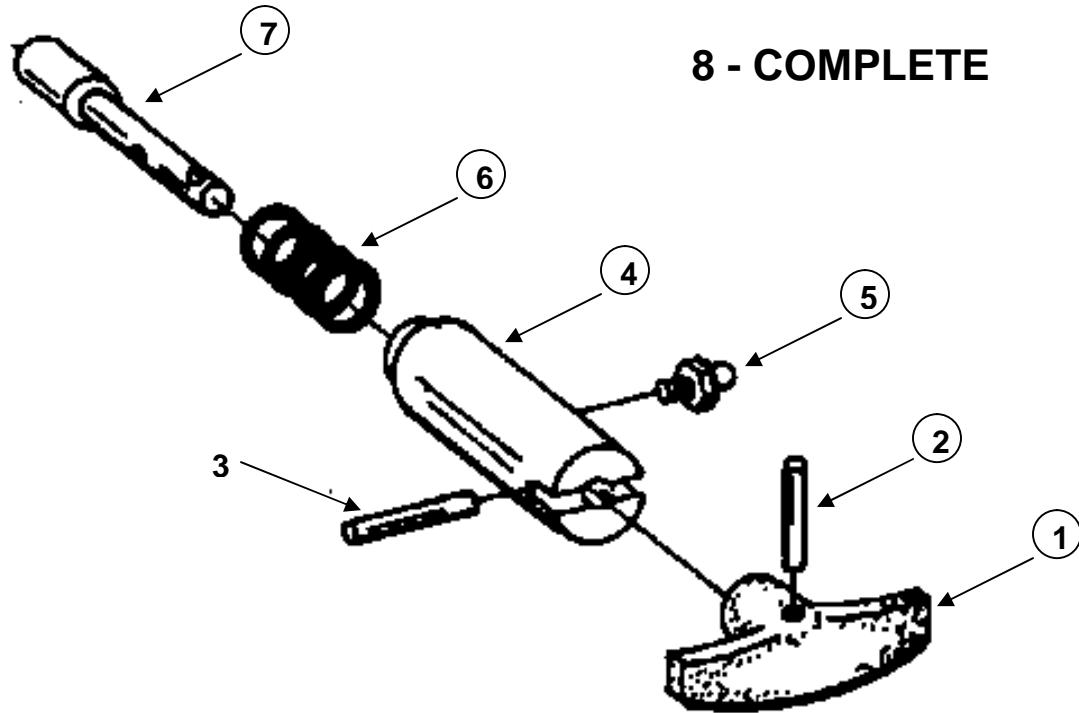
Parts Breakout



174017087 1" CAMLOCK MDT

ITEM	PART NUMBER	DESCRIPTION	WEIGHT
1	0304658	VINYL HANDLE GRIP, RED – ½"	
2	0304659	HANDLE PIN, ZP – ½"	
3	0304652	CAMLOCK CAP & BARREL – 1"	
4	0304653	SPRING, MDT & HDT	
5	0304654	CAMLOCK PLUNGER PIN, ZP – 1"	
6	0300113	GREASE ZERK, ¼" – 28	

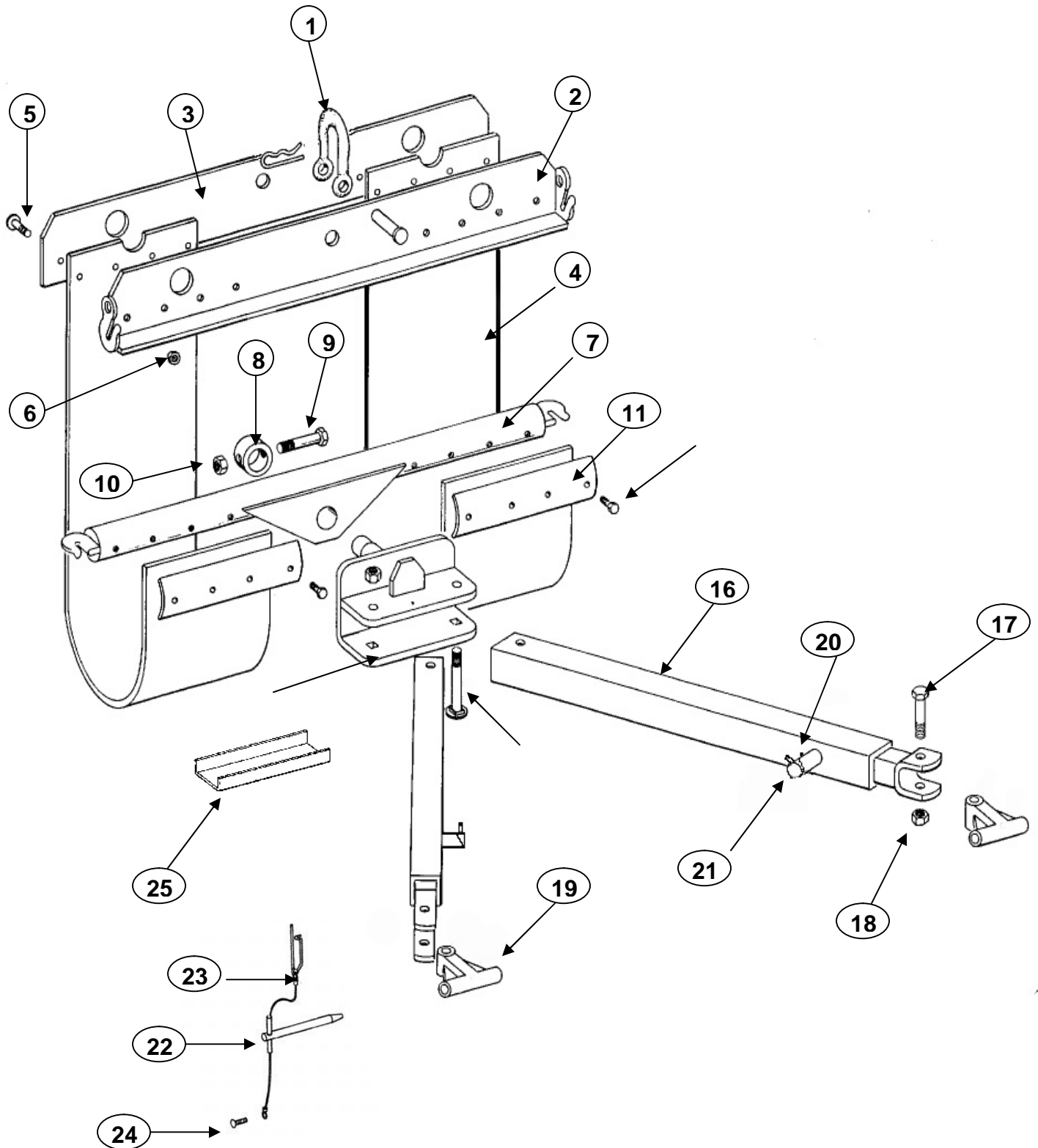
T-HANDLE ASSEMBLY – 5/8



ITEM	PART NUMBER	DESCRIPTION	QTY
1	0300331	T-Handle, Drilled w/ 5/32" x 1" Roll Pin	1
2	0400560	5/32" x 1" Roll Pin	1
3	0400553	3/32" x 1" Roll Pin	1
4	0700367	Lock Barrel – 5/8" I.D. (Tow Sling)	1
5	0300113	Grease Zerk – 1/4"-28	1
6	0300276	Spring,	1
7	0700358	Plunger, 5/8"	1
8	751-0020-625	T-Handle Assembly 5/8" Complete w/ All Components Above	1

124001228 TOWSLING

Capacity 3,500 Lift – 7,000 Towing

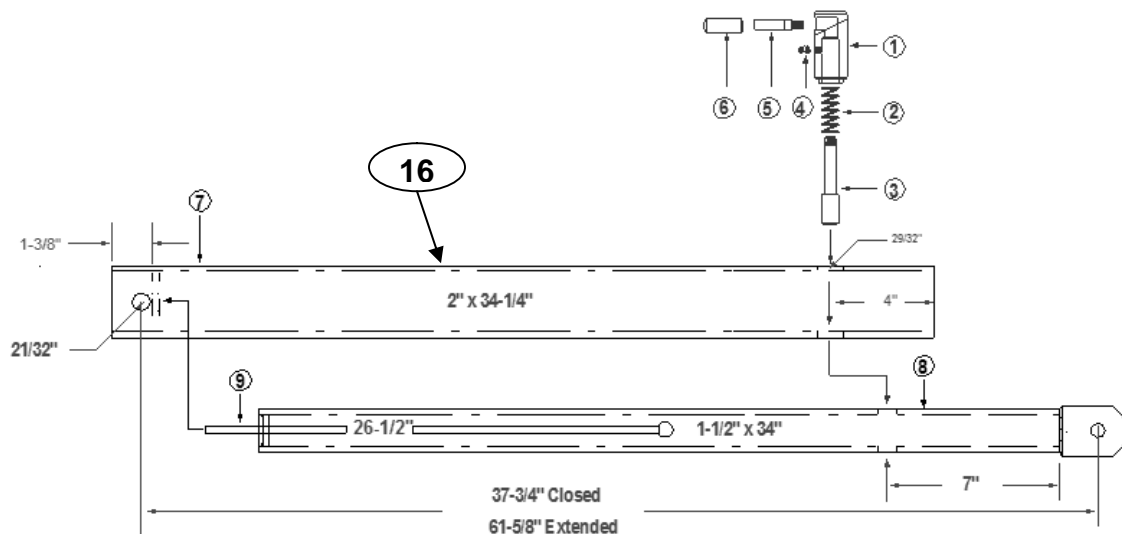


124001228 TOWSLING

Capacity 3,500 Lift – 7,000 Towing

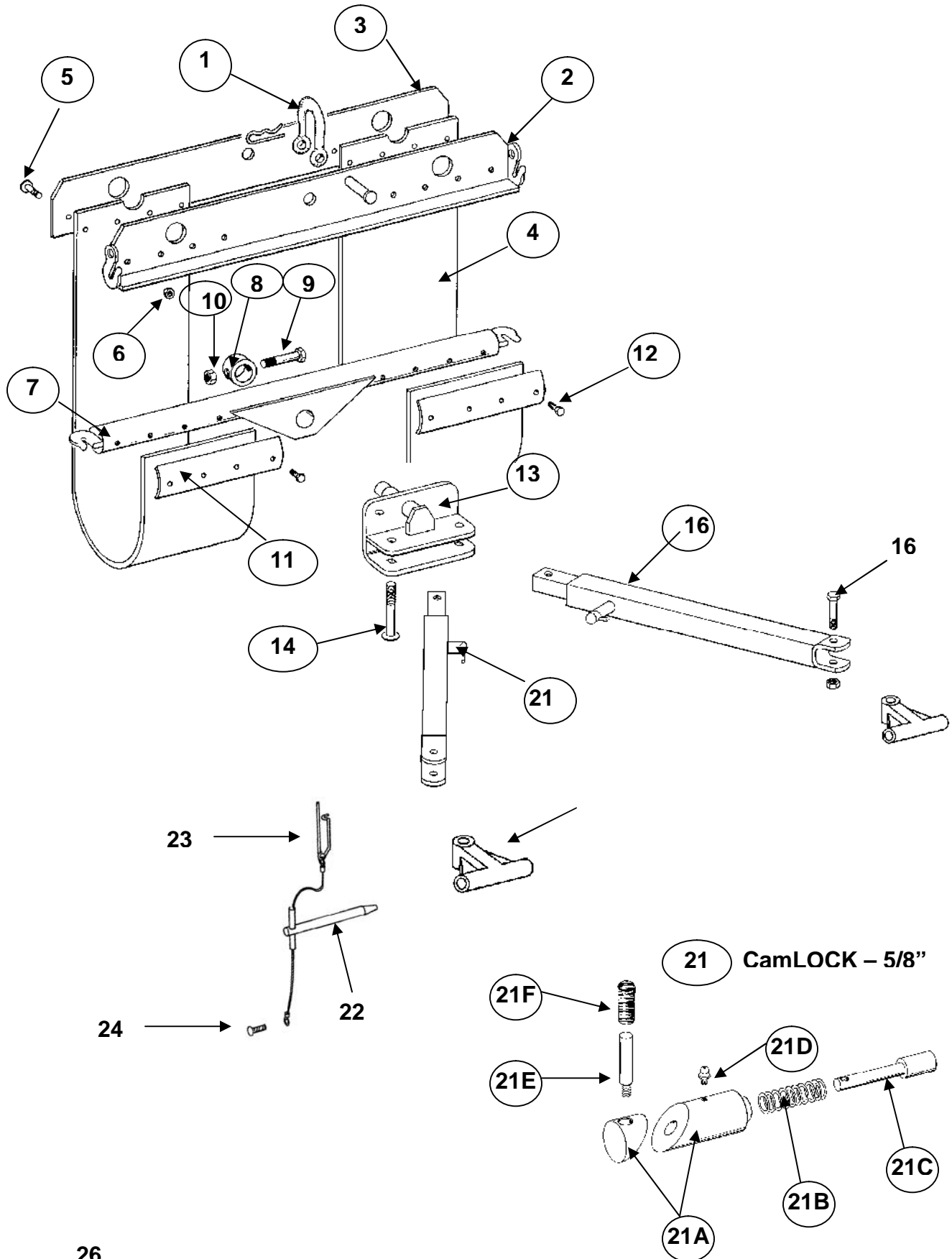
Parts Breakout

ITEM NO#	PART NUMBER	DESCRIPTION	QTY
1	0300357	Shackle – 5/8" RT13 w/ Pin & Clip	1
2	0800137	Angle, Spreader Bar – w/Grab Hooks	1
3	0703822	Bar, Spreader – 4 Hole	1
4	0700359	Belt, 9-1/2" x 46"	2
5	0400156	Bolt, 3/8"-16 x 1-1/2" Carriage	8
6	0400392	Nut, Nyloc – 3/8"-16	8
7	0800132	Anchor Bar	1
8	0700581	Bar, Center Pin Locking Retainer	1
9	0400133	Bolt, 3/8" x 3" HHCS	1
10	0400392	Nut, 3/8"-16 Nyloc	1
11	0700372	Belt Retainer	2
12	0400105	Screw 5/16" x 18 Self Tapping Hex Head	8
13	0800743	Block Swivel – 2"	1
14	0400268	Bolt, Carriage 5/8" x 4"	2
15	0400421	Nut, 5/8"-11 Nyloc	2
16	0900657	Spacer Bar – Closed: 7-7/8" – Ext: 61-3/8"	2
17	0400185	Bolt, 1/2" -13 x 2-1/2" HHCS	2
18	0400408	Nut, 1/2" Nyloc	2
19	0200003	Knuckle, Casting	2
20	0300113	Grease Zerk – 1/4"-28	6
21	350-0625-000	CamLOCK – 5/8" (174017076)	2
22	0900660	Retaining Pin Assembly, 5/8" x 6"	2
23	0300247	Retaining Pin	2
24	0400044	Drive Screw	2
25	0703819	Bracket – Anchor Bar Storage	1



124001583 TOWSLING

Capacity 3,500 Lift – 7,000 Towing

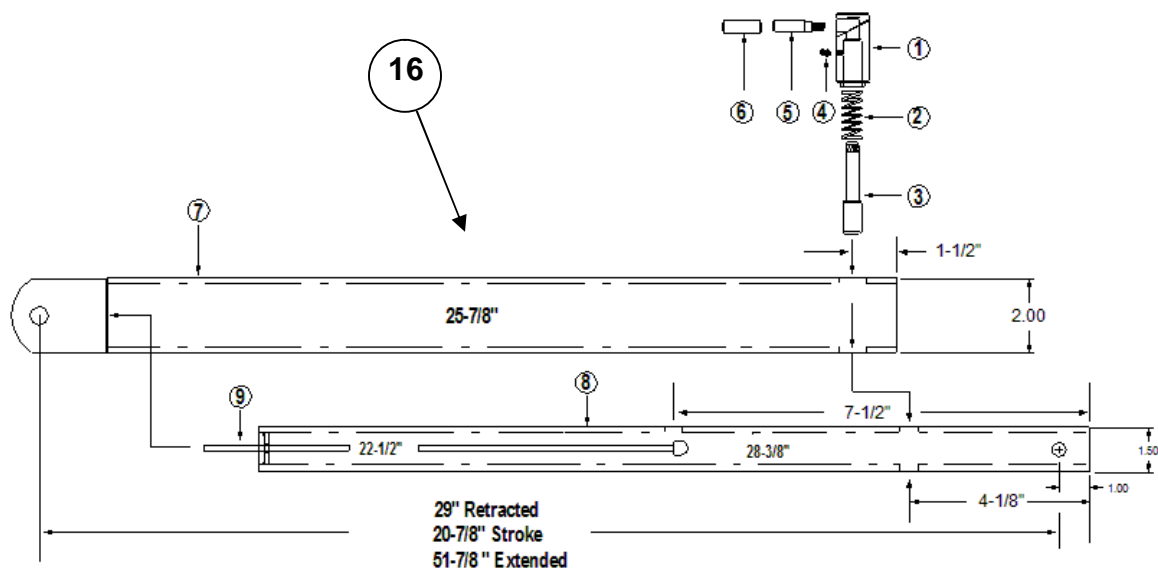


124001583 TOWSLING

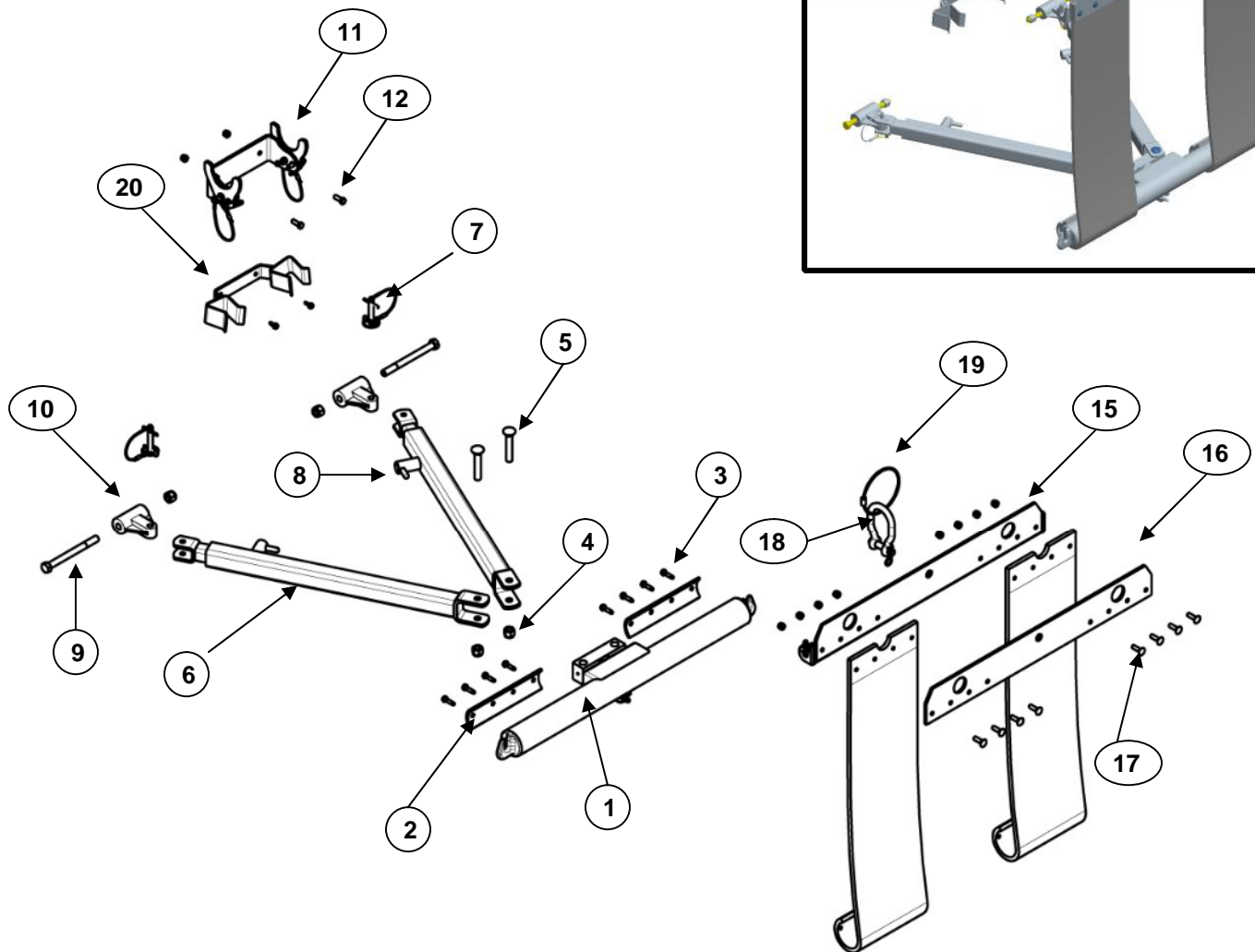
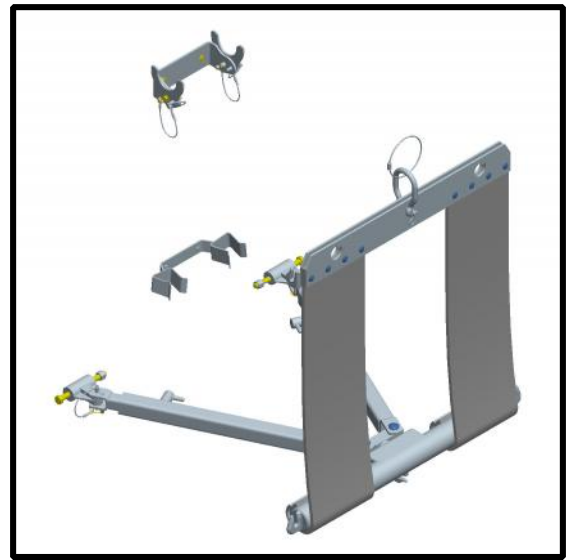
Capacity 3,500 Lift – 7,000 Towing

Parts Breakout

ITEM NO#	PART NUMBER	DESCRIPTION	QTY
1	0300357	Shackle – 5/8" RT13 w/ Pin & Clip	1
2	0800137	Angle, Spreader Bar – w/Grab Hooks	1
3	0703822	Bar, Spreader – 4 Hole	1
4	0704707	Belt, 9-1/2" x 39"	2
5	0400156	Bolt, 3/8"-16 x 1-1/2" Carriage	8
6	0400392	Nut, Nyloc – 3/8"-16	8
7	0800132	Anchor Bar	1
8	0700581	Bar, Center Pin Locking Retainer	1
9	0400133	Bolt, 3/8" x 3" HHCS	1
10	0400392	Nut, 3/8"-16 Nyloc	1
11	0700372	Belt Retainer – 4 Hole	2
12	0400105	Screw 5/16" x 18 Self Tapping Hex Head	8
13	0801600	Block Swivel -1-1/2"	1
14	0400268	Bolt, Carriage 5/8" x 4"	2
15	0400421	Nut, 5/8"-11 Nyloc	2
16	0901347	Spacer Bar – Complete – Closed: 29"	2
17	0400185	Bolt, 1/2" -13 x 2-1/2" HHCS	2
18	0400408	Nut, 1/2" Nyloc	2
19	0200003	Knuckle, Casting	2
20	0300113	Grease Zerk – 1/4"-28	6
21	350-0625-000	CamLOCK – 5/8" (174017076)	2
22	0900660	Retaining Pin Assembly, 5/8" x 6"	2
23	0300247	Retaining Pin	2
24	0400044	Drive Screw	2
25	0704708	Bracket – Anchor Bar Storage	1



124002734 TOW SLING MODULAR EXPRESS



124002734 TOW SLING MODULAR EXPRESS

ITEM	PART NUMBER	DESCRIPTION	QTY
1	0910171	Anchor Bar, Conventional TS	1
2	0700372	Retainer – 4 Hole Belt	2
3	0400105	Bolt, Thread Cutter – 5/16"-18 x 1-1/4" HWH TCF ZP	8
4	0400421	Nut, Nyloc 5/8"-11	4
5	0400275	Bolt, Carriage 5/8"-11 x 3-1/2"	2
6	0904733	Spacer Bar, 32" with 5/8" CamLOCK	2
7	0908817	Hitch Pin – 1/2" x 2-5/16" w/Cable (Knuckle)	2
8	350-0625-000	CamLOCK – 5/8" (w/Spacerbar)	2
9	0400362	Bolt, Hex 5/8"-11 x 7" ZP	2
10	0200003	Knuckle, Casted 3-1/2" TS	2
11	0908904	Bracket – Center Tow Sling Storage	1
12	0400126	Bolt, HHCS Grade 5 ZP 3/8"-16 x 1"	2
13	0400392	Nut, Nyloc 3/8"-16 ZP	10
14	0704707	Belt, 9-1/2" x 39" Multi-Ply TS	2
15	0801102	Spreader Angle, Bent Plate w/Hooks 4-Hole	1
16	0703822	Bar – Spreader – 4 Hole	1
17	0400156	Carriage Bolt, 3/8"-16 x 1-1/2" ZP	8
18	0300357	Shackle RT-5 – ZP w/Pin & Clip	1
19	0310539	Cable Loop (Storage Cable Assy' – 15")	1
20	0806997	Bracket, Spacerbar Weldment	1
21	0400062	Bolt, Thread Cutter – 1/4"-20 x 3/4"	2
22	0900176	Chain Assembly, J-Hook, T & 5/16" Grab – Grade 70	2

MOUNTING BRACKETS

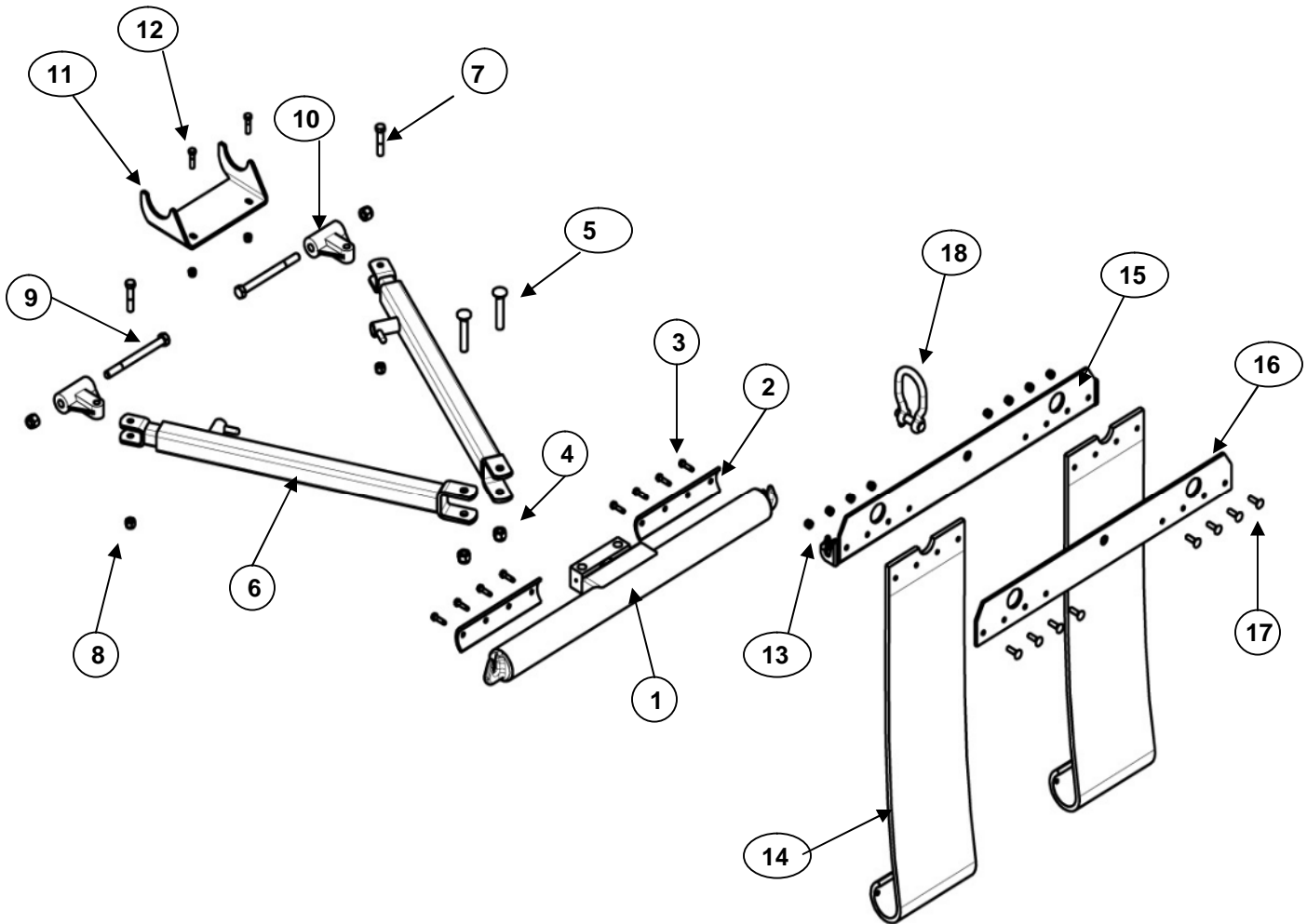


**0806997 TOW SLING STOW
BRACKET WELDMENT
USED ON A 124002734**

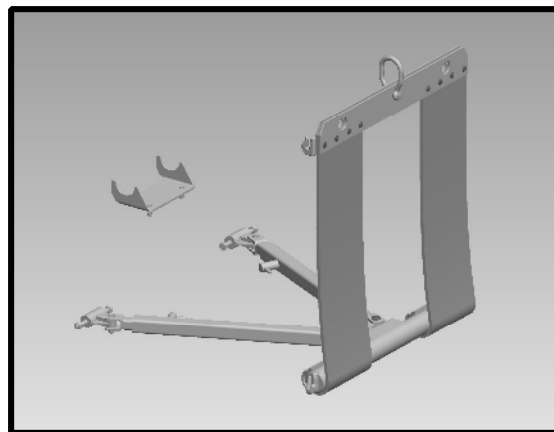


**0908904 TOW SLING STOW
A-B BRACKET MODULAR
EXPRESS**

124004094 TOWSLING CONVENTIONAL



124004094 TOWSLING CONVENTIONAL



ITEM	PART NUMBER	DESCRIPTION	QTY
1	0910172	Anchor Bar, Conventional TS	1
2	0700372	Retainer – Belt	2
3	0400105	Bolt, Thread Cutter – 5/16"-18 x 1-1/4" HWH TCF ZP	8
4	0400421	Nut, Nyloc 5/8"-11	4
5	0400275	Bolt, Carriage 5/8"-11 x 3-1/2"	2
6	0904733	Spacer Bar, 32" with 5/8" CamLOCK	2
7	0400185	Bolt, Hex 1/2"-13 x 2-1/2" ZP	2
8	0400408	Nut, Nyloc 1/2"-13	10
9	0400362	Bolt, Hex 5/8"-11 x 7" ZP	2
10	0200003	Knuckle, Casted 3-1/2" TS	2
11	0721703	Bracket – Center Tow Sling Storage	1
12	0400132	Bolt, HHCS Grade 5 ZP 3/8"-16 x 1-1/2"	2
13	0400392	Nut, Nyloc 3/8"-16 ZP	10
14	0704707	Belt, 9-1/2" x 39" Multi-Ply TS	2
15	0801102	Spreader Angle, Bent Plate w/Hooks 4-Hole	1
16	0703822	Bar – Spreader – 4 Hole	1
17	0400156	Carriage Bolt, 3/8"-16 x 1-1/2" ZP	8
18	0300357	Shackle RT-5 – ZP w/Pin & Clip	1
19	174017076	CamLOCK – 5/8" Complete - Replacement	2
20	0807168	Body Bracket – Conventional	2
21	0400188	Bolt, HHCS 1/2"-13 x 2" (Body Bracket)	8
22	0900176	Chain Assembly, J-Hook, T & 5/16" Grab – Grade 70	2



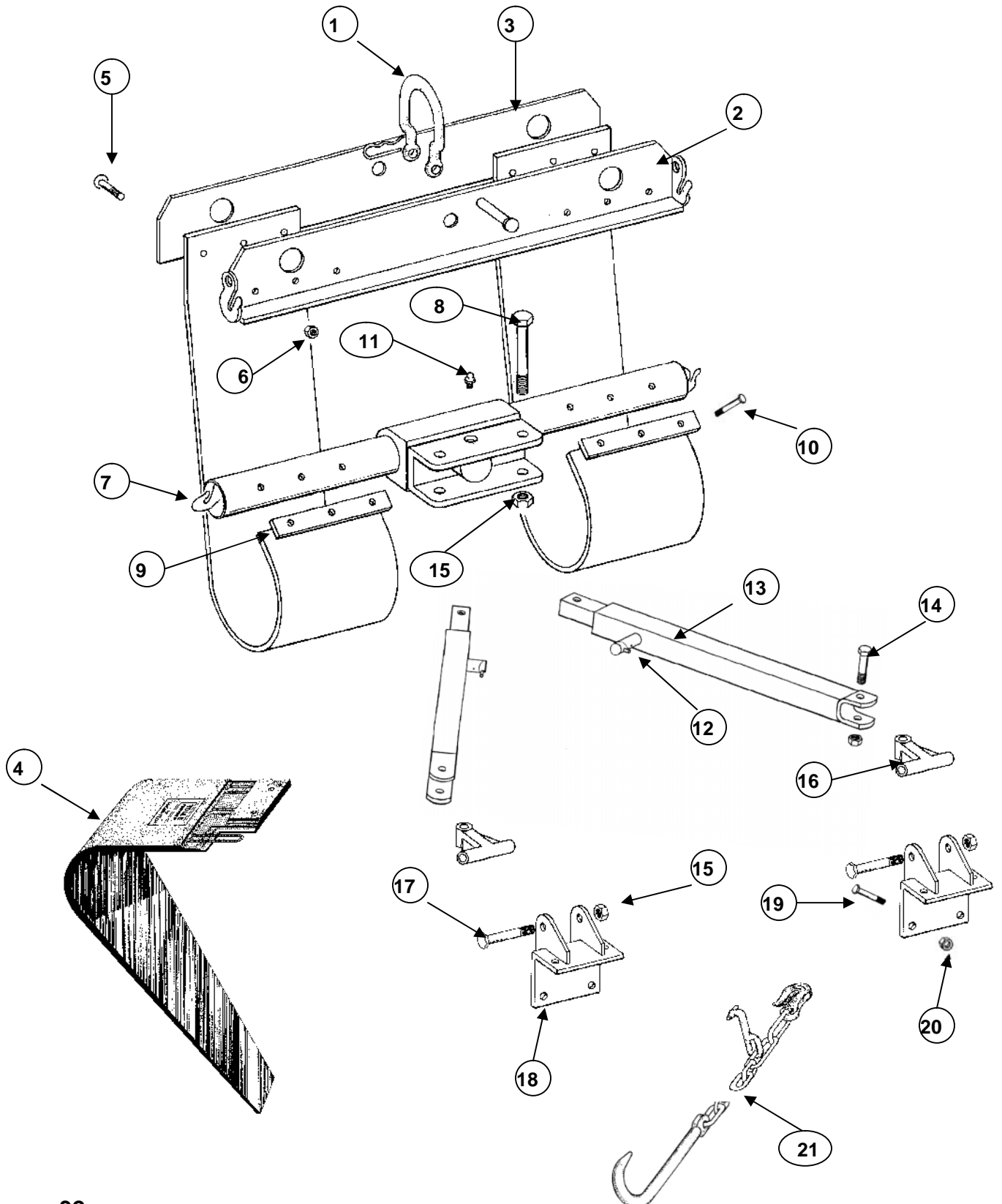


LOW PRO

3940090021

LP TOW SLING

Weight: Capacity 6,000 LBS.
with 31-1/4" Spacerbars



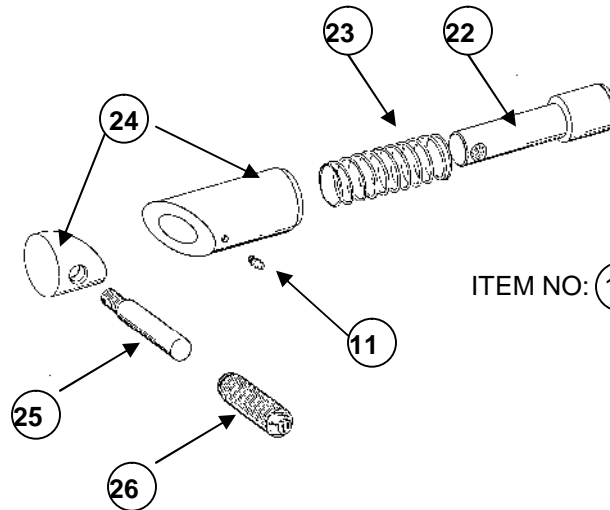


LOW PRO

3940090021

LP TOW SLING

Weight: Capacity 6,000 LBS.
with 31-1/4" Spacerbars



ITEM NO: (12) 174017087 CAMLOCK™ 1"

ITEM	QTY	PART NUMBER	DESCRIPTION	WT / LBS
1	1	751-RT13-625	SHACKLE, RT-13 5/8" w/CLEVIS, & BRIDGE PIN - COMPLETE	1.43
2	1	751-0731-800	TOP BENT PLATE w/HOOKS, 3-HOLE	14.75
3	1	751-0531-800	TOP PLATE, 3-HOLE	10.00
4	2	174017083	CABLE BELT, 3-HOLE (8" x 42") – (Pair)	14.00
5	6	0400156	CARRIAGE BOLT, 3/8" x 1-1/2"	.10
6	6	0400392	NYLON LOCK NUT, 3/8"-16	.10
7	1	751-3033-TLP	ANCHOR BAR w/SWIVEL LP STYLE 3-HOLE	35.00
8	2	0400296	BOLT, HHCS 3/4"-10 x 4" GRADE #5	.56
9	2	100948	RETAINER, BELT 3-HOLE 800 SERIES STYLE	.66
10	6	479-3816-125	SCREW, TREAD ROLLING, 3/8"-16 x 1-1/4"	.06
11	3	0300113	GREASE ZERK, 1/4" - 28	.01
12	2	174017087	CAMLOCK™ – 1" COMPLETE	1.04
13	2	0900109-325	SPACER BAR 31-1/4" MDT w/ 1" CAMLOCK	29.00
14	2	0400285	BOLT, HHCS 3/4"-10 x 3" GRADE #5	.50
15	6	0400430	NYLON LOCK NUT, 3/4"- 10	.13
16	2	801-0003-750	KNUCKLE, 3/4" x 3/4" x 4-1/2" LONG	3.00
17	2	0400293	BOLT, HHCS 3/4"-10 x 6" GRADE #5	.85
18	2	0306752	BODY BRACKET, 3/4" TS & TB	6.00
19	8	0400200	CARRIAGE BOLT, 1/2"-13 x 2" GRADE #5	.13
20	8	0400408	NYLON LOCK NUT, 1/2"- 13	.06
21	2	0900176	CHAIN ASSEMBLY, J,T, & GRAB GRADE #70	15.50
22	2	0304654	PLUNGER – 1"	.50
23	2	0304653	SPRING, MDT CamLOCK	.03
24	2	0304652	HOUSING w/ CAP ZP - CamLOCK	.59
25	2	0304659	HANDLE PIN	.13
26	2	0304658	VINYL HANDLE GRIP - RED	.01

This is to certify that all **MAGNA TECH, INC.** products are to be free of defects in material and workmanship under normal use and service for a full one-year period from the date of invoice purchase.

MAGNA TECH, INC. reserves the right to limit this warranty in cases of misuse and abuse. Neither do we warrant any product that has been repaired, altered, **installed incorrectly**, neglected, accidentally damaged or subjected to loads exceeding our recommendations.

This warranty excludes accidental damage, normal wear and maintenance neglect.

Specifically excluded from this warranty are parts manufactured by other companies other than *MAGNA TECH, INC.* which are supplied as components of our products. Only the parts, either manufactured or modified by *MAGNA TECH, INC.* shall be covered by this warranty. The purchaser of our products shall be limited on all such other parts to the warranties of the manufacturers of such parts.

Warranty work is to be performed without charge by *MAGNA TECH, INC.* or any authorized repair center.

MAGNA TECH, INC. reserves the right to change or improve its products at anytime without obligation to make changes or improvements to equipment previously sold.

It is expressly understood that this product is intended for the use of towing vehicles, any other use will be at the owner's risk, and may void all said warranties.

During the warranty period, return your *MAGNA TECH, INC.* product with you proof of purchase receipt to the O.E.M. or distributor where your purchase was made, or call *MAGNA TECH, INC.* for warranty instruction procedures. Your *MAGNA TECH, INC.* product will be repaired at our option and returned to you.

This warranty is non transferable and will become effective only upon filling out the card within 30 days of purchase. Failure to do so will result in non-warranty of product.

Model & Serial Numbers:

_____ / _____

MAGNA TECH, INC. / TOLLE PRODUCTS

4331 SOUTH JOHNSON ROAD

CHANUTE, KS 66720

PH: (620) 431-3490

FAX: (620) 431-4227

www.magnatechinc.com

NOTES

“Delivering the Finest in Technology”



MAGNA TECH, INC.

4331 SOUTH JOHNSON ROAD
CHANUTE, KS 66720
PH: (620) 431-3490
FAX: (620) 431-4227
www.magnatechinc.com

© COPYRIGHT 1993– 2010 MAGNA TECH, INC.™ (ALL RIGHTS RESERVED)